

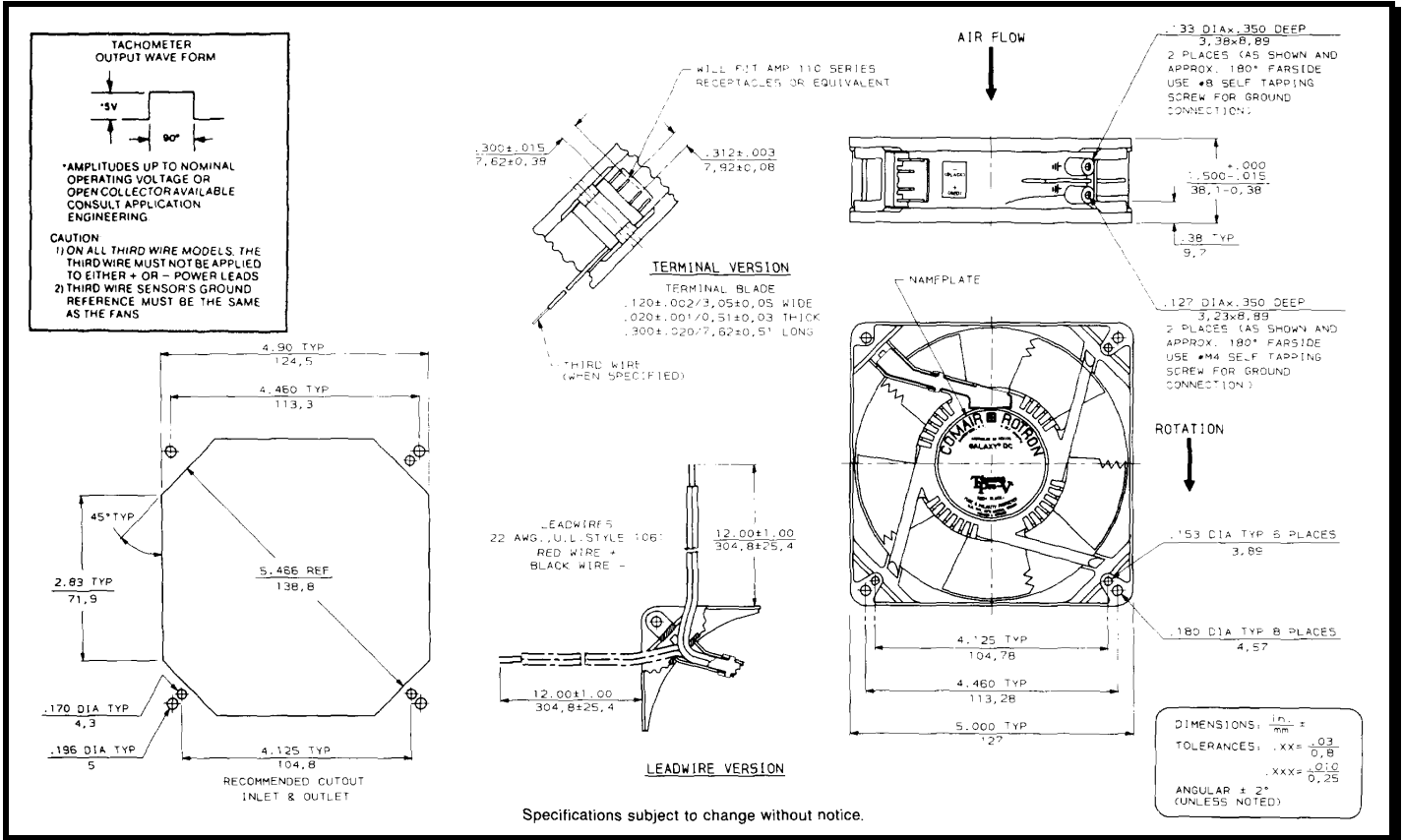
SPECIFICATIONS

Model Number: GL12Z3-E2
Part Number: 19043193A

Version: 01
June 22, 2016



Mechanical Drawing:



Specifications subject to change without notice.

Motor:

Nominal Voltage	= 12 vdc
Operating Voltage Range	= 6 - 14 vdc
Nominal Running Current	= 2.50 amps
Max. Locked Rotor Current	= 5.00 amps
Running Power	= 30.0 watts
RPM	= 3950 RPM
Bearings	= Ball
Airflow	= 190 CFM
Noise	= 59.4 dBA

Construction:

Venturi: Die Cast Aluminum, Black
 Propeller: Plastic, Black, UL 94V-0

Life Expectancy:

This fan is designed for continuous duty life of 62,000 hours at 50°C.

Additional Features:

Brushless DC Motor
 Locked Rotor Protection
 Polarity Protected
 Automatic Restart Capability
 Operating Temperature: -10°C to 70°C
 Storage Temperature: -40°C to 85°C
 Environmental Shield: Type 2

Termination:

12" Lead wires, AWG 22, UL 1061
 Red = Power (+)
 Black = Return (-)

Agency Approvals:

UL, CUL, CE

PQ Curve:

