

SPECIFICATIONS

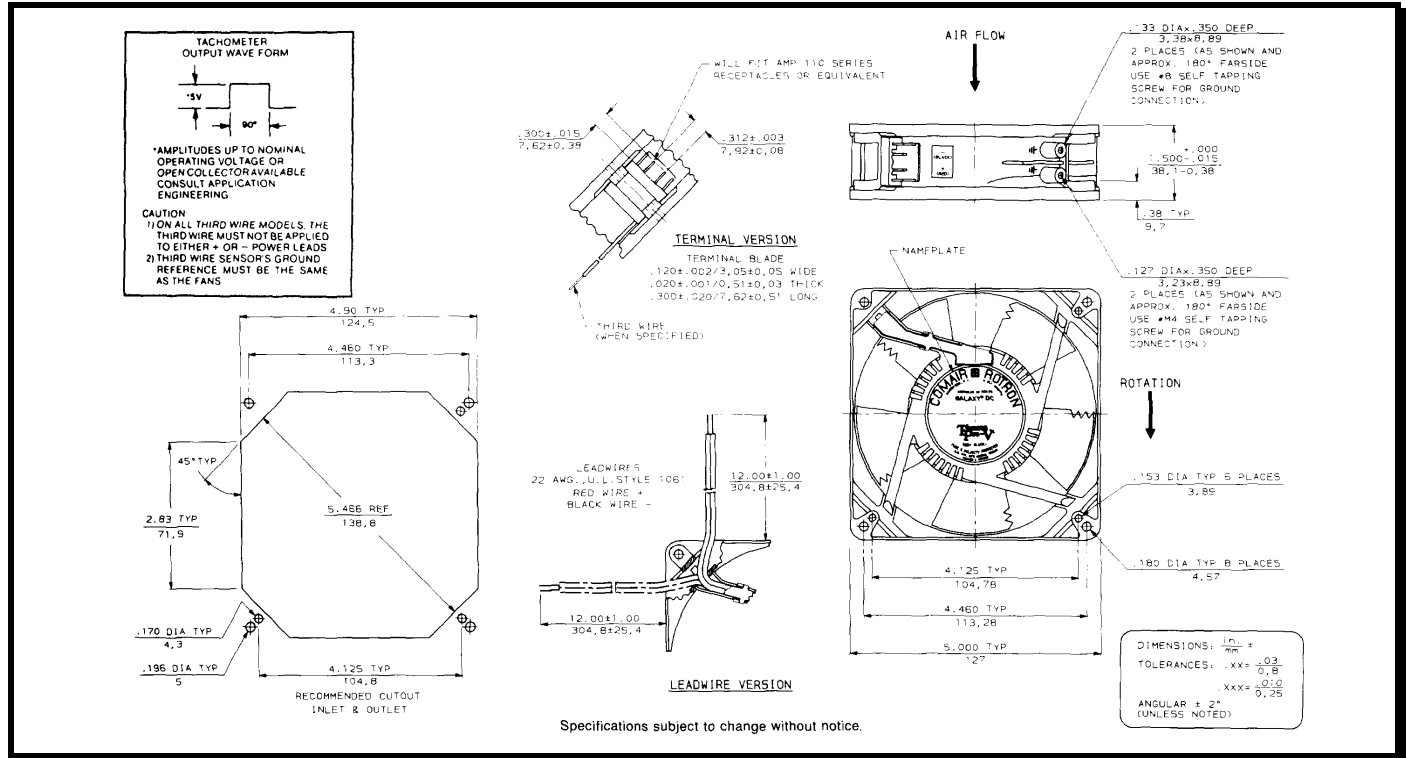
RoHS Compliant



Model Number: GLD24U3E2
Part Number: 19040409A

Version: 01
May 25, 2017

Mechanical Drawing:



Motor:

Nominal Voltage = 24 VDC
 Operating Voltage Range = 12 - 28 VDC
 Nominal Running Current = 1.63 amps
 Max. Locked Rotor Current = 2.50 amps
 Running Power = 39.1 watts
 Average Speed = 5200 RPM
 Bearings = Ball
 Air Flow = 240 CFM
 Static Pressure = 1.25 (in/H₂O)
 Acoustic = 65 dBA

Construction:

Venturi: Die Cast Aluminum, Black.
 Propeller: Polycarbonate, Black, UL94V-0.

Life Expectancy:

This fan is designed for continuous duty life of 60,000 hours at 70°C.

Agency Approvals:

UL, CUL, CE

Additional Features:

Brushless DC Motor
 Electronic Locked Rotor Protected
 Polarity Protection
 Automatic restart capability
 Soft start in-rush capability
 Operating Temperature: -10°C to 70°C
 Storage Temperature: -40°C to 85°C
 Programmable(PWM)

Tachometer Specifications:

Output: Open Collector
 I_c: 20 mA. Max
 V_{cc}: 28 VDC Max
 Pulses per Revolution: 2
 Isolated: No

Termination:

12" Lead wires, 22 AWG, UL 1061
 Red - Power (+)
 Black - Return (-)
 Blue/White - Tachometer (Output)
 Yellow - Program (input)

PQ Curve:

