

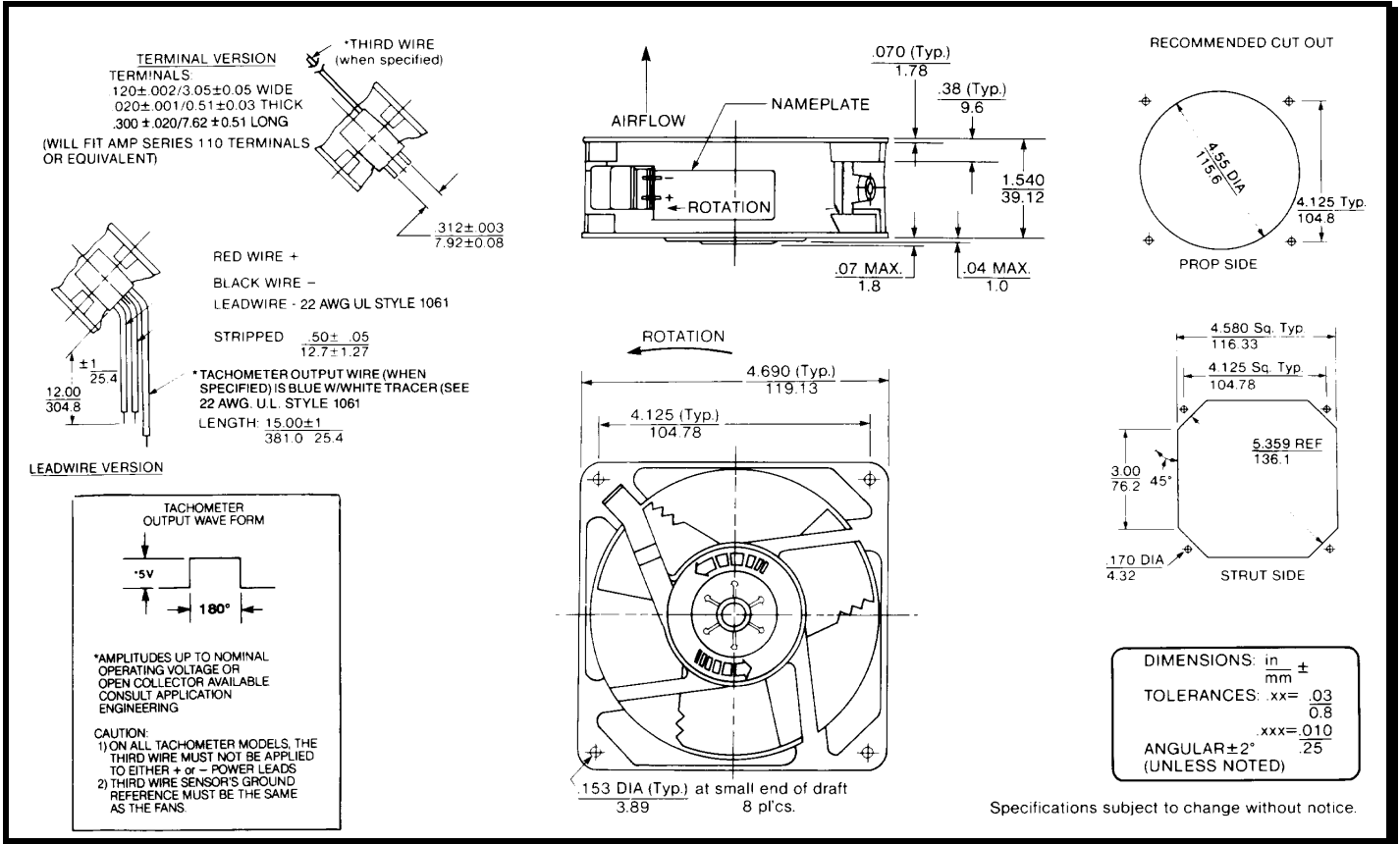
# SPECIFICATIONS



**Model Number:** WD24C3  
**Part Number:** 19030717A

**Version:** 01  
**Feb 27, 2024**

## Mechanical Drawing:



## Motor:

Nominal Voltage = 24 vdc  
 Operating Voltage Range = 12 – 28 vdc  
 Nominal Running Current = 0.10 amps  
 Locked Rotor Current = 0.34 amps  
 Running Power = 2.4 watts  
 Average Speed = 2250 RPM  
 Bearings = Ball  
 Air Flow = 77.5 CFM  
 Acoustic = 39.4 dBA

## Construction:

Venturi: Die-Cast Zinc Alloy, Black  
 Propeller: Plastic, Black, UL 94V-0

## Life Expectancy:

This fan is designed for continuous duty life of 55,000 hours at 70°C.

## Additional Features:

Brushless DC Motor  
 Locked Rotor Protection  
 Polarity Protection  
 Automatic Restart Capability  
 Operating Temperature: -10°C to 70°C  
 Storage Temperature: -40°C to 85°C

## Agency Approvals:

UL, CUL, CE

## Termination:

12" Lead wires, 22 AWG, UL 1061  
 Red = Power (+)  
 Black = Ground (-)

PQ Curve:

