

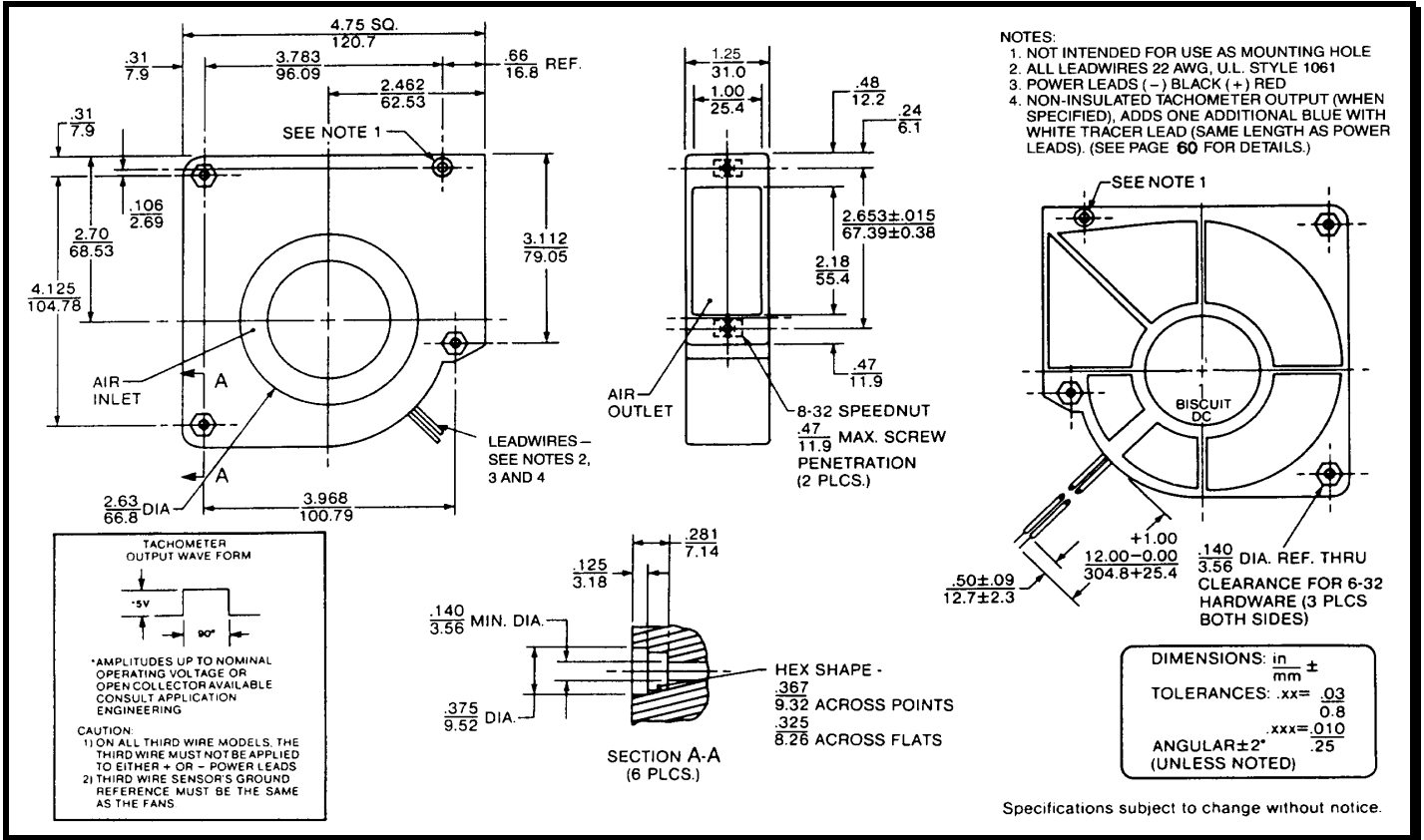
# SPECIFICATIONS



Model Number: BD24B7  
Part Number: 19030622A

Version: 01  
Jan 18, 2018

## Mechanical Drawing:



## Motor:

Nominal Voltage = 24 Vdc  
Operating Voltage Range = 18 - 28 vdc  
Nominal Running Current = 0.48 amps  
Locked Rotor Current = 0.95 amps  
Running Power = 11.5 watts  
Average Speed = 3040 rpm  
Bearings = Ball  
Air Flow = 24.3 cfm  
Noise = 51.2 dBA

## Construction:

Venturi: Plastic, Black, UL94V-0  
Propeller: Plastic, Black, UL94V-0

## Agency Approvals:

UL, CUL, CE

## Life Expectancy:

This fan is designed for continuous duty life of 52,000 hours at 70°C

## Additional Features:

Brushless DC Motor  
Polarity Protected  
Locked Rotor Protection  
Automatic Restart Capability  
Operating Temperature Range: -10°C to +70°C  
Storage Temperature: -40°C to +85°C

## Tachometer:

Output: 5 VDC, TTL Compatible  
I 10 mA Typical  
Pulses per Revolution: 2  
Isolated No

## Termination:

12.0" lead wires, AWG 22, UL1061 Style  
Red - Fan Power  
Black - Fan Return  
Blue/White - Tachometer Output

PQ Curve:

