

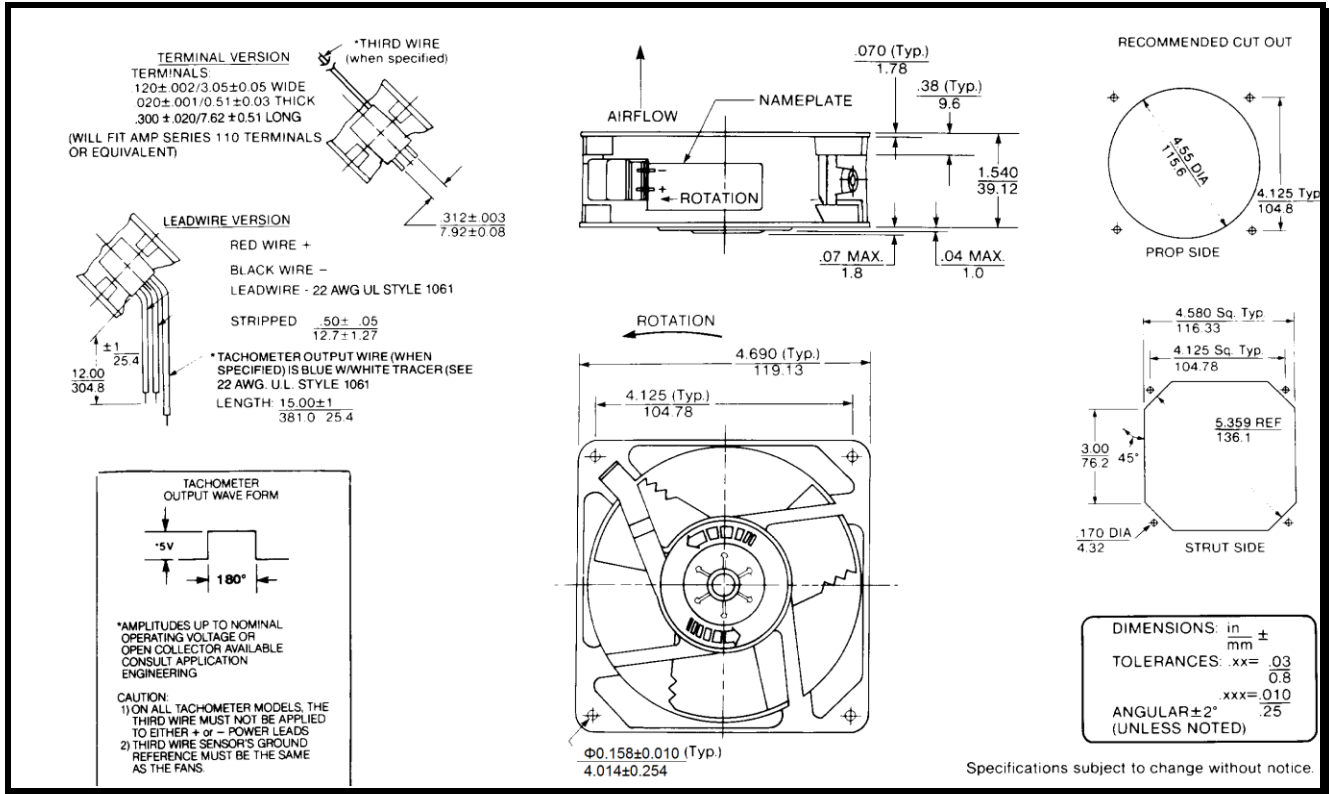
# SPECIFICATIONS



**Model Number:** MD48B2  
**Part Number:** 19028870A

**Version:** 01  
**Jan 19, 2018**

## Mechanical Drawing:



## Motor:

Nominal Voltage = 48 vdc  
 Operating Voltage Range = 24 – 56 vdc  
 Nominal Running Current = 0.120 amps  
 Locked Rotor Current = 0.400 amps  
 Running Power = 5.8 watts  
 Average Speed = 3100 rpm  
 Bearings = Ball  
 Air Flow = 106CFM  
 Acoustic = 50.0 dBA

## Construction:

Venturi: Die-Cast Aluminum, Black  
 Propeller: Plastic, Black, UL 94V-0

## Life Expectancy:

This fan is designed for continuous duty life of 55,000 hours at 70°C.

## Additional Features:

Brushless DC Motor  
 Locked Rotor Protection  
 Polarity Protection  
 Automatic Restart Capability  
 Operating Temperature: -10°C to 70°C  
 Storage Temperature: -40°C to 85°C

## Termination:

2x0.12" Terminals

## Agency Approvals:

UL, CUL, CE

PQ Curve:

